



Supporting your research in proteomics, genomics, biochemistry, microbiology, environmental biology, bioprocessing, agriculture and food science

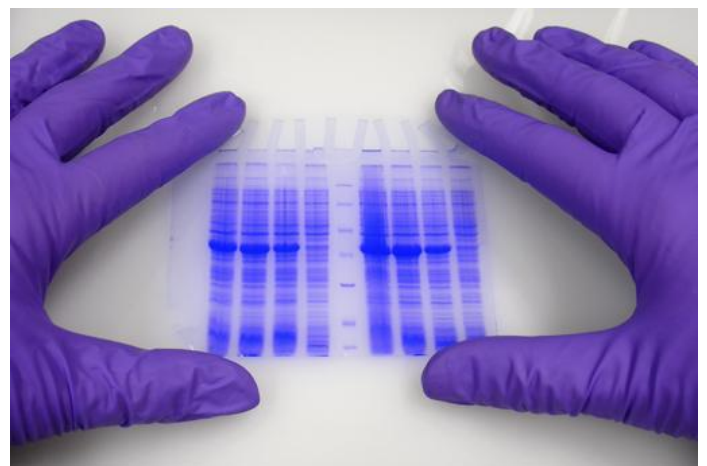


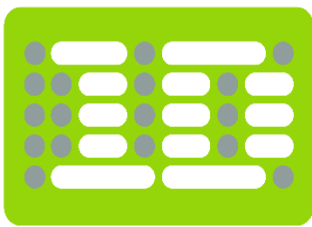
Who are Totallab?

- We are a dynamic, personal business with over 25 years' experience supporting your essential needs for life science research
- We do this with basic and advanced software for visualising and quantifying the separation of proteins, DNA and RNA by 1D SDS PAGE and 2D gel electrophoresis.

Why choose Totallab?

- Easy-to-use, high quality image analysis software to help you get results from core research techniques
- Our software is so simple to use that you can download it and try it on your own data.
- Our software is vendor-neutral, analysing all common image file formats in one workflow. You only need to learn one software package whatever hardware supplier you prefer.
- We are so confident that our software will give your research an advantage compared to competitor software we support you to trial it head-to-head on the same data set.
- We guarantee to continually develop our 1D or 2D gel analysis software and release a new version every year.
- We provide you with personal support and always reply within 24 hours of receiving a support question.



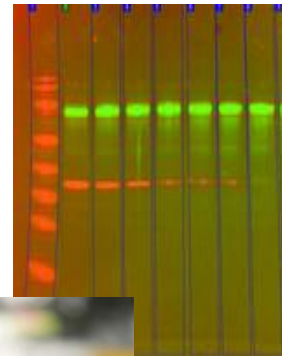


CLIQS & CLIQS 1D Pro

Core Laboratory Image Quantification Software

CLIQS – All your essential image analysis software in one simple package

- 1D gel electrophoresis analysis of your DNA, RNA and protein samples including Western blot analysis with loading controls
- High-density DNA and protein arrays
- Colony counting and basic 2D spot measurement
- General feature-based image analysis
- 21 CFR Part 11 version for your GMP/GLP requirements



CLIQS 1D Pro - DNA Fingerprinting & Strain Analysis

- Measure the molecular diversity of your samples with CLIQS 1D Pro, combining simple analysis of 1D gel images and a database of results for band pattern matching
- Identify sample relationships across multiple gels using dendrograms and data matrices
- Build up reference libraries of band patterns to share and classify new strains and samples

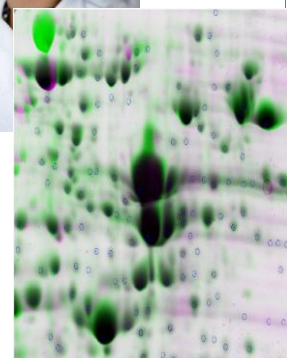
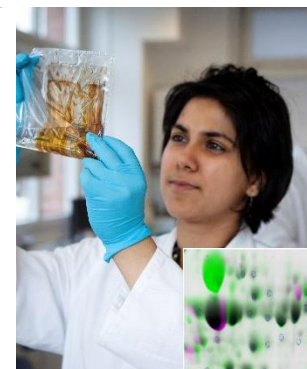


SameSpots & SpotMap

For differential expression & Western blot analysis

SameSpots overcomes common problems faced using 2D gel electrophoresis for protein analysis such as lack of reproducibility in results, hours of tedious spot editing and confidence in the statistical significance of measuring protein expression changes.

- 4th-generation alignment-based software package
- In development
- Works on the latest versions of Windows (XP, 7, 8 and 10)
- Easy-to-use, requiring minimal training (less than 2 hours)
- Gives very rapid results (5 minutes per gel)
- Can be used for both DIGE and Single-stain



SpotMap gives you rapid, simple and accurate comparison of 2D PAGE gels and Western blot coverage. SpotMap overcomes the challenges you face for analysing both colorimetric and flurometrically stained 2D gels and blots

Keel House, Garth Heads, Newcastle Upon Tyne, NE1 2JE, UK

Tel: + 44 (0)191 255 88 99

Email: info@totallab.com

Web: www.totallab.com

